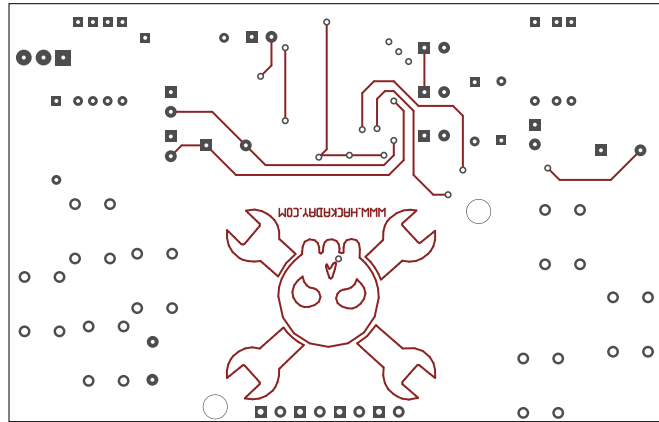
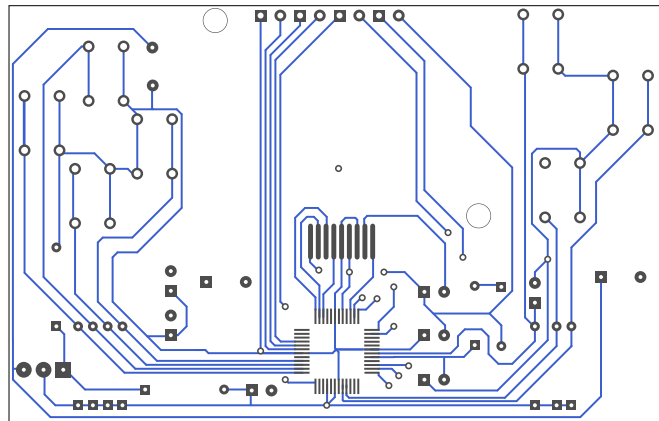


2. component
3. solder
4. componentmask
5. soldermask
6. plated-drill
7. topsilk
8. bottomsilk
9. toppaste
10. topassembly
11. bottomassembly
12. fab

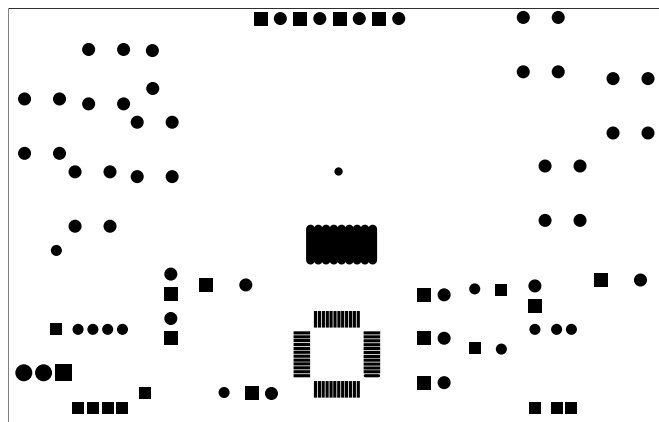


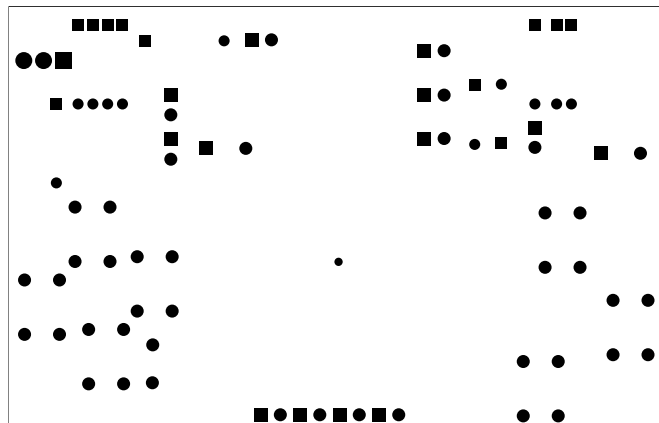
Γαλιε κομπονιμ

Layer solder



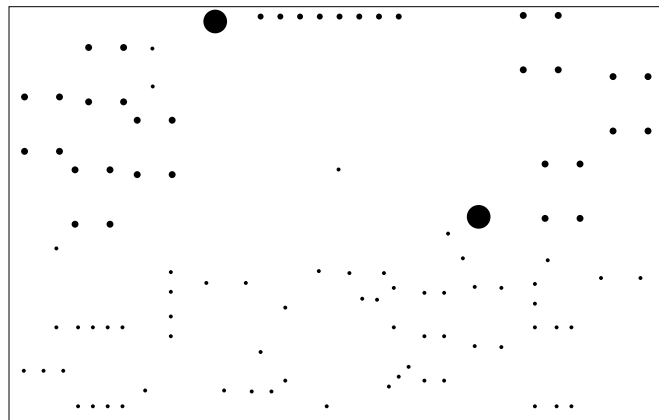
Layer componentmask



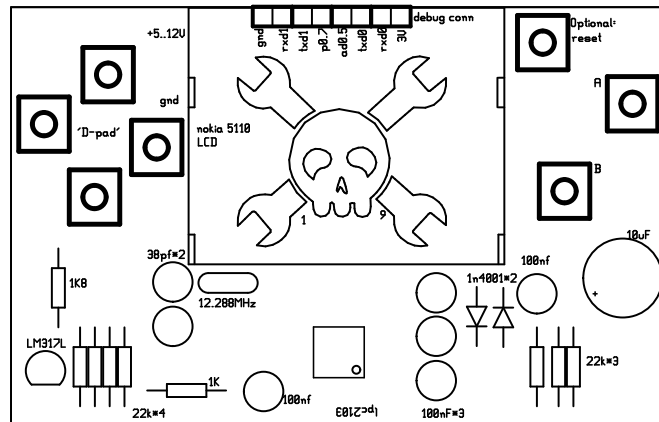


Γράφει: zoj@easgk

Layer plated-drill



Layer topsilk

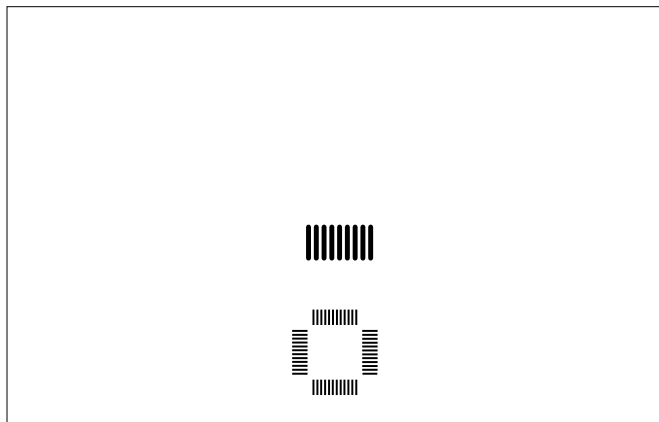




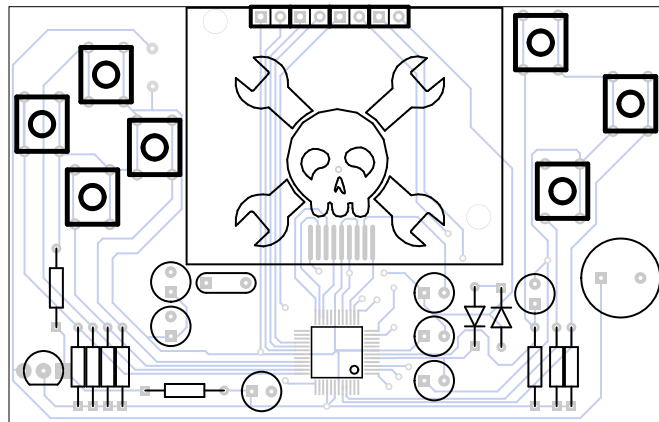
Гэвч рофтомсйк

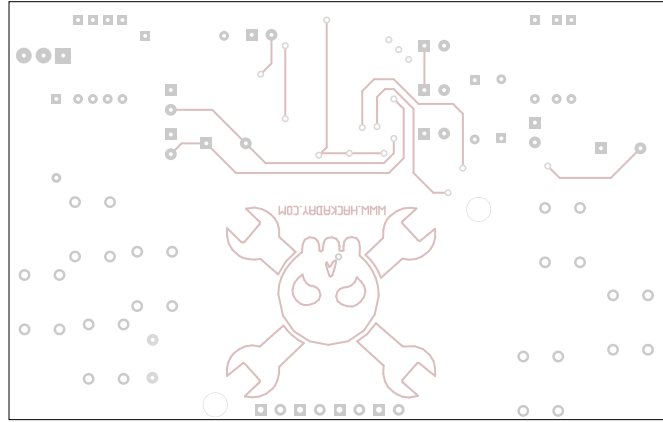


Layer toppaste



Layer topassembly

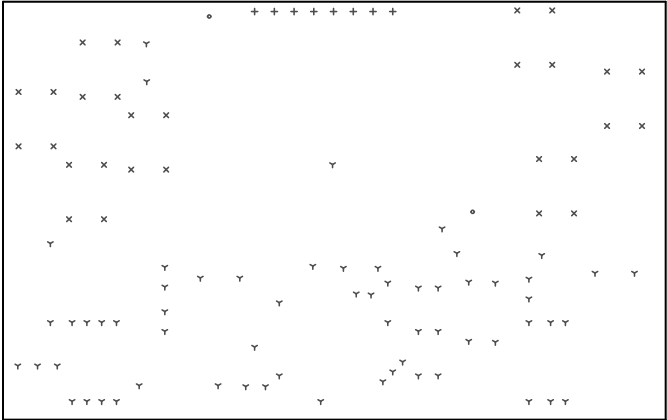




Γαλκι ποττομασσεμπριλ

There are 4 different drill sizes used in this layout, 101 holes total

Symbol	Diam. (Inch)	Count	Plated?	
Y	<u>0.020</u>	<u>63</u>	<u>YES</u>	Title: chip8emu - Fabrication Drawing
+	<u>0.030</u>	<u>8</u>	<u>YES</u>	Author: Jeroen Domburg
x	<u>0.035</u>	<u>28</u>	<u>YES</u>	Date: Sun Nov 26 00:39:23 2006 UTC
o	<u>0.120</u>	<u>2</u>	<u>YES</u>	Maximum Dimensions: 3358 mils wide, 2118 mils high



Board outline is the centerline of this 10 mil rectangle - 0,0 to 3358,2118 mils